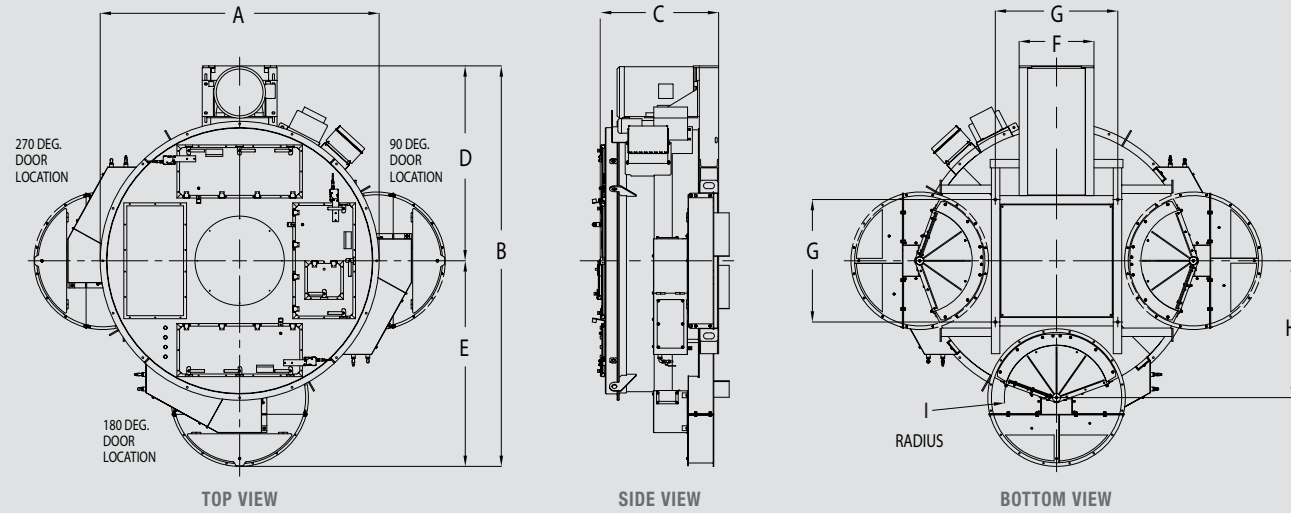


TURBIN REFRACTORY MIXER SPECIFICATIONS



	TURBIN MIXER MODEL - SUPER	50	100	200	300
A	OVERALL WIDTH	5'-9"	8'-5"	9'-8"	11'-5"
B	OVERALL LENGTH	9'-6"	12'-7"	13'-10"	16'-6"
C	CHARGING HEIGHT	3'-1"	3'-4"	3'-11"	4'-7"
D	CENTER TO OUTSIDE OF MOTOR	4'-8"	6'-0"	6'-9"	8'-9"
E	CENTER TO OUTSIDE DOOR GUARD	4'-9"	6'-7"	7'-1"	8'-5"
F	MOTOR BASE WIDTH	2'-0"	2'-2"	2'-7"	3'-0"
G	MOUNTING BOLT SPACING	2'-11"	3'-7"	4'-3"	5'-7"
H	MIXER CENTER TO DOOR PIVOT	2'-11"	4'-2"	4'-9"	5'-8"
I	DOOR OPENING RADIUS	1'-3"	1'-10"	1'-10"	2'-4"
	EMPTY MIXER WEIGHT	5,500 LBS	10,000 LBS	14,000 LBS	18,000 LBS
	TURBIN MIXER MODEL - SUPER	50	100	200	300
	MAXIMUM FILLING CAPACITY - POUNDS	2,000	4,000	8,000	12,000
	MINIMUM FILLING CAPACITY - CUBIC FEET	4	10	13	20
	MAXIMUM FILLING CAPACITY - CUBIC FEET	11	22	43	65
	DRIVE MOTOR - HORSEPOWER	40	60	100	150

NOTE: CAPACITY BASED ON REFRACTORY MATERIAL WEIGHING 185 LBS/CU FT

MADE IN THE USA FOR YOUR WORLD

Mixer Systems, the parent corporation of DustMASTER, has been manufacturing equipment for the concrete products and other related industries since 1979. Today, our systems are at work in some 60 countries around the world. An 86,000 square-foot facility houses complete design and fabrication capabilities. Our product line is the largest in the industry, built with American reliability to stand up to the challenges of your world.



All under one roof at Mixer Systems headquarters: Design, engineering, manufacturing and a multi-million dollar parts inventory.

DUSTMASTER
ENVIRO SYSTEMS

190 Simmons Avenue
P.O. Box 10
Pewaukee, WI 53072
info@dustmaster.com
262-691-3100 | dustmaster.com
1-800-756-4937 Toll Free in USA

MIX
Mixer Systems, Inc.

DM 100 031226. Printed in USA.
© DustMASTER Enviro Systems

REFRACTORY RELIABILITY

TURBIN REFRACTORY MIXER

MAKES SMOOTH WORK OF MIXING ABRASIVE REFRACTORY CASTABLES



PROVEN AND PRODUCTIVE UNDER DEMANDING CONDITIONS.

No matter what the makeup of your castables, they're no match for the DustMASTER Turbin. Reliable outboard drive powers through irregularly shaped materials and sticky additives, while the unique braiding action produces a homogeneous blend in minutes. Hardened, replaceable liners and paddles provide maximum life, and a generous capacity helps you manage large pours efficiently.

DUSTMASTER
ENVIRO SYSTEMS

PROUDLY
MADE IN
AMERICA

THE HEAT IS ON LONG BEFORE YOUR REFRACTORIES GO TO WORK

TURBIN REFRACTORY MIXER

RELY ON THE MIXER THAT SETS YOU UP FOR SUCCESS.

You're meeting demands for quality, durability, and delivery from the start. Specify the mixer that is the mainstay of the refractory industry. Our U.S. factory fulfills orders efficiently, offers an installation package, and backs mixers with full service and support. Plus, our warehouse stocks a complete inventory of parts and ships most orders within 24 hours.



HEAVY-DUTY CONSTRUCTION

All-welded steel tank mounted to channel frame with lifting lugs

LUBRICATION FOR MAXIMUM PERFORMANCE

Automatic lubrication keeps gears and seals lubricated at all times

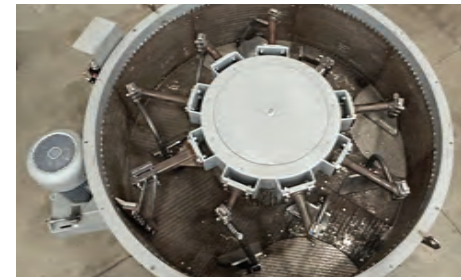
WEAR PART PACKAGES AVAILABLE

Optional liner packages for special applications

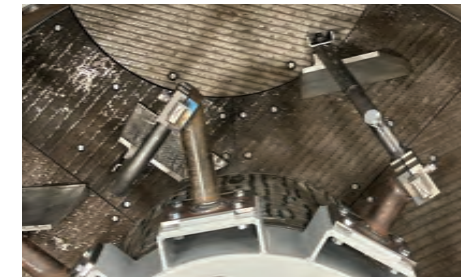
EASY SERVICEABILITY

Motor located outside mixer for ease of service and cooler operation

FEATURES TO MANAGE THE DEMANDS OF YOUR MATERIALS



Heavy-duty mixing tank (shown with cover removed); center drive hub and enclosed gearbox



AR360 tank wall and floor liners are standard. AR500 liners are available



Cast Ni-Hard wall scrapers



Cast Ni-Hard mixing paddles



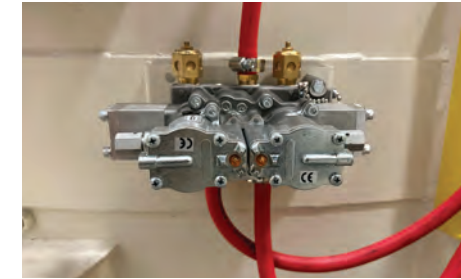
Mixer interlock station with E-Stop, warning horn & strobe and hour meter



Mixer transmission lube station w/ pump & filter



Mixer motor w/ dust shield



Solenoid valves w/ speed controls for automatic discharge door operation



Air filter/regulator/lubricator for all pneumatic cylinders and valves supplied



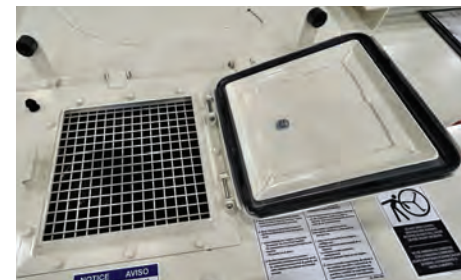
Discharge door position limit switches



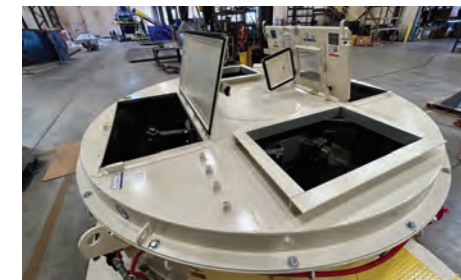
Hinged access door trapped key interlocks



Hinged access doors for cleaning & part replacement



Hinged inspection door on mixer cover



Custom mixer batch inlets, venting ports, and water inlets



Mixer discharge door with guarding and round connection flange