



TURBIN MIXER



<p>Mixer Tank 3/16" thick steel tank wall 3/8" thick steel tank floor Tank is welded to structural steel channel frame Channel frame has lifting lugs for unloading and handling of mixer</p>	<p>Drive Train Gyro-drive unit Removable through top or bottom of mixer Oil lube system with pump, flow switch and reservoir Belt-driven from reducer to motor TEFC 230/460 volt, 3 phase, 60 hertz motor</p>
<p>Liners Abrasion resistant steel floor liners Abrasion resistant steel wall liners All are replaceable, bolted segments</p>	<p>Lubrication System Electrically operated, automatic lubrication system All seals remain lubricated at all times</p>
<p>Wall Scrapers and Paddles Formed steel arms with replaceable rubber wear guards Inside and outside replaceable cast Ni-hard scrapers Cast Ni-hard, or rubber, replaceable floor paddles</p>	<p>Mixer Cover Steel top cover lid Hinged access doors on top of mixer One door will have a hinged inspection door Doors are gasketed for dust and water containment Doors include 'doors closed' interlock switches</p>
<p>Discharge Door Steel door pivots on self-lubricated sleeve bearing Up to 3 doors at 90 degree increments Air cylinder operated linkage with discharge valve Flow control valve for speed adjustment Air line lubricator and moisture trap</p>	<p>Paint One color, high grade machinery enamel</p>



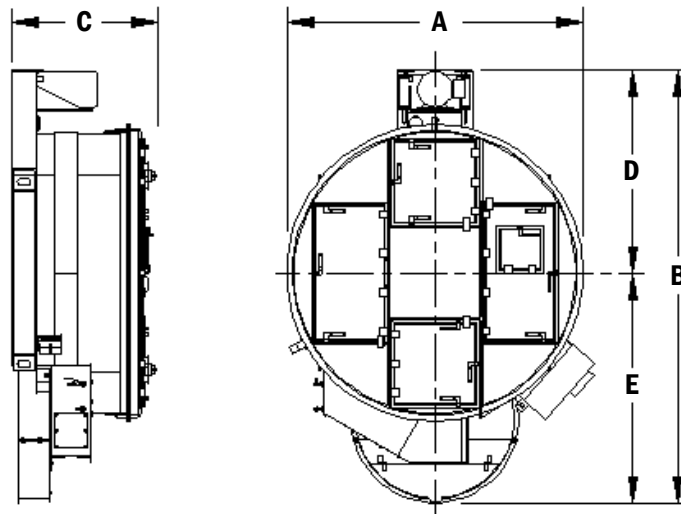
Phone 262-691-3100
 190 Simmons Ave \ PO Box 10
 Pewaukee, WI 53072-0010
www.mixersystems.com





TURBIN MIXER

MODEL	INPUT CAPACITY	MOTOR
50	13 CU FT or 1,300 LBS	20 HP
100	27 CU FT or 2,700 LBS	40 HP
150	41 CU FT or 4,100 LBS	50 HP
200	72 CU FT or 7,200 LBS	100 HP
300	81 CU FT or 8,100 LBS	100 HP
450	121 CU FT or 12,100 LBS	150 HP



	DESCRIPTION / MODEL	50	100 / 150	200	300	450
A	OVERALL WIDTH	6'-0"	8'-4"	9'-6"	11'-4"	11'-4"
B	OVERALL LENGTH	9'-1"	12'-1"	13'-7"	16'-4"	16'-4"
C	OVERALL HEIGHT	3'-4"	3'-10"	4'-1"	4'-10"	4'-10"
D	☺ TO OUTSIDE OF MOTOR	4'-7"	5'-10"	6'-9"	8'-1"	8'-1"
E	☺ TO DISCHARGE DOOR	4'-6"	6'-3"	6'-10"	8'-3"	8'-3"
	MIXER WEIGHT	5,500 LBS	10,000 LBS	13,500 LBS	16,000 LBS	18,000 LBS



Phone 262-691-3100
 190 Simmons Ave \ PO Box 10
 Pewaukee, WI 53072-0010
www.mixersystems.com

