



# PLANETARY MIXER



<p><b>Mixer Tank</b>          3/16" thick steel tank wall          3/8" thick steel tank floor          Tank is welded to structural steel channel frame          Channel frame has lifting lugs for unloading and handling of mixer</p>	<p><b>Drive Train</b>          Planetary drive unit          Direct drive on Model 0.5          Belt-driven from reducer to motor on all other models          Removable from top of mixer          TEFC 230/460 volt, 3 phase, 60 hertz motor</p>
<p><b>Liners</b>          Abrasion resistant steel floor liners          Abrasion resistant steel wall liners          All are replaceable, bolted segments</p>	<p><b>Lubrication System</b>          Static oil system on Models 0.5, 1.0 and 1.5          Oil lube system with pump, flow switch and reservoir on Models 2.0, 3.0 and 4.0</p>
<p><b>Wall Scrapers and Paddles</b>          Formed steel arms with replaceable rubber wear guards          Inside and outside replaceable cast Ni-hard scrapers          Cast Ni-hard, or rubber, replaceable floor paddles</p>	<p><b>Mixer Cover</b>          Steel top cover lid          Hinged access doors on top of mixer          One door will have a hinged inspection door          Doors are gasketed for dust and water containment          Doors include 'doors closed' interlock switches</p>
<p><b>Discharge Door</b>          Steel door pivots on self-lubricated sleeve bearing          Up to 4 doors at 90 degree increments          Air cylinder operated linkage with discharge valve          Flow control valve for speed adjustment          Air line lubricator and moisture trap</p>	<p><b>Paint</b>          One color, high grade machinery enamel</p>



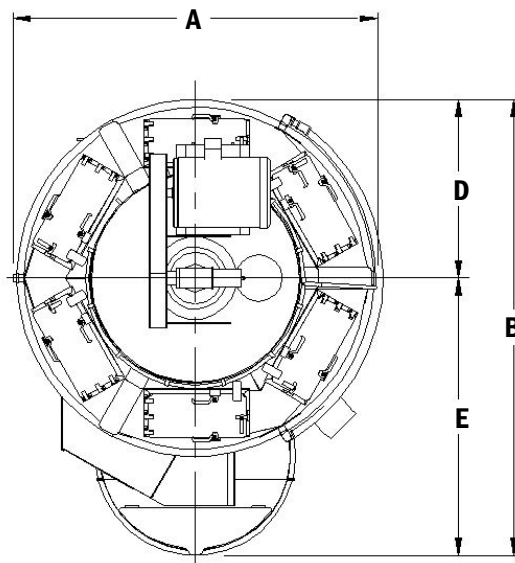
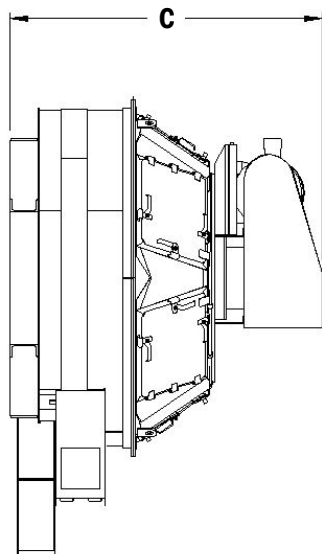
Phone 262-691-3100  
 190 Simmons Ave \ PO Box 10  
 Pewaukee, WI 53072-0010  
[www.mixersystems.com](http://www.mixersystems.com)





# PLANETARY MIXER

MODEL	INPUT CAPACITY	MOTOR
0.5	19 CU FT or 1,900 LBS	15 HP
1.0	41 CU FT or 4,100 LBS	50 HP
1.5	61 CU FT or 6,100 LBS	60 HP
2.0	81 CU FT or 8,100 LBS	100 HP
3.0	125 CU FT or 12,500 LBS	125 HP
4.0	161 CU FT or 16,100 LBS	150 HP



DESCRIPTION / MODEL	0.5	1.0 / 1.5	2.0	3.0	4.0
A OVERALL WIDTH	6'-0"	8'-4"	9'-6"	11'-4"	11'-4"
B OVERALL LENGTH	7'-6"	10'-5"	11'-7"	13'-11"	13'-11"
C OVERALL HEIGHT	6'-3"	7'-2"	9'-4"	10'-7"	10'-7"
D $\phi$ TO OUTSIDE OF TANK	3'-0"	4'-2"	4'-9"	5'-8"	5'-8"
E $\phi$ TO DISCHARGE DOOR	4'-6"	6'-3"	6'-10"	8'-3"	8'-3"
MIXER WEIGHT	5,200 LBS	9,625 LBS	13,250 LBS	15,860 LBS	17,650 LBS



Phone 262-691-3100  
 190 Simmons Ave \ PO Box 10  
 Pewaukee, WI 53072-0010  
[www.mixersystems.com](http://www.mixersystems.com)

